

# Relume Traffic Control Box LED Light Panels

“Enhancing Brightness and Durability in Traffic Control Boxes”



**Increased Visual Acuity-** The white LEDs provide a clear/crisp daylight look for ultimate visibility.

**Powerful Lighting-** The efficiency of Relume’s patented *Silver Circuit Technology* enables a brighter, more reliable LED light engine with energy savings up to 50% over traditional lighting sources. The system is powered by a reliable 24V power supply.

**Decreased Maintenance-** Today’s downsized work forces still have the same workload to accomplish. Relume LED technology drastically reduces maintenance normally required with traditional lighting systems. Increased productivity is one more benefit that enables you to be more responsive to other areas of concern while reducing replacement part inventories

**Patented Silver Circuit Technology-** Each unit draws only 15W of power. Advanced, proprietary circuit design for greater thermal efficiency.

**Environmentally Friendly-** All Relume light engines are environmentally friendly and totally *lead free*.

**Approved-** NEMA, UL and CSA tested and approved.

**Versatile-** Install anywhere in box., recommended locations provided.

**Retrofit-** Installs in minutes into new or existing boxes.

## **7 Year Warranty**

Relume guarantees the light engine shall be free from all defects in materials and workmanship for a period of 7 years.



[www.jamservicesinc.com](http://www.jamservicesinc.com)

**Call 925-455-5267**

# ***Relume* Traffic Control Box LED Light Panels**

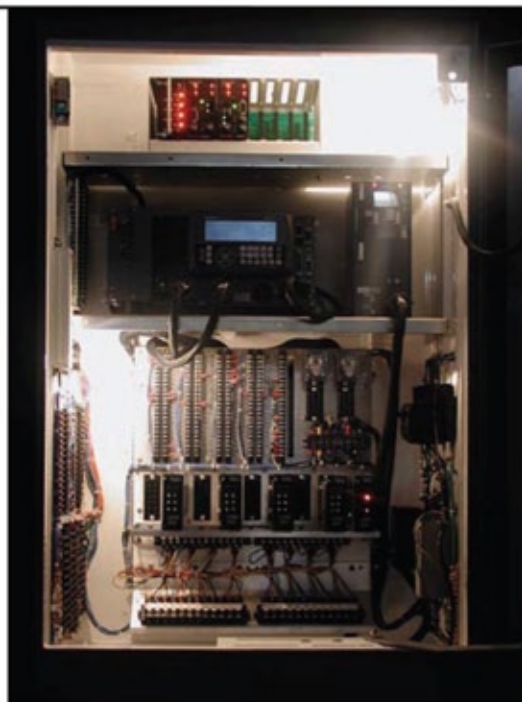
“Enhancing Brightness and Durability in Traffic Control Boxes”

“See the difference in visibility between new Relume Silver Circuit LED Technology and incandescent light bulbs.”



**Relume Silver Circuit  
LED Technology**

VS.

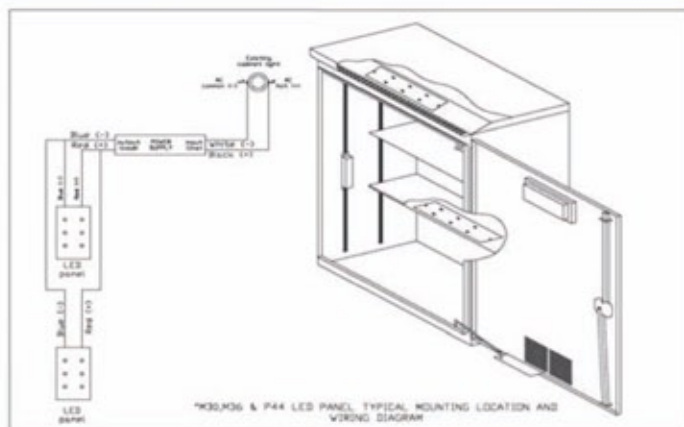


**Incandescent Light Bulbs**

## **Ordering Information**

Part Number	Description
796TCB1P	1 LED Panel w/ 1-80W PS
796TCB2P	2 LED Panels w/ 1-80W PS
796TCB3P	3 LED Panels w/ 1-80W PS
796TCB4P	4 LED Panels w/ 1-80W PS

## **Installation Instructions**



[www.jamservicesinc.com](http://www.jamservicesinc.com)

**Call 925-455-5267**